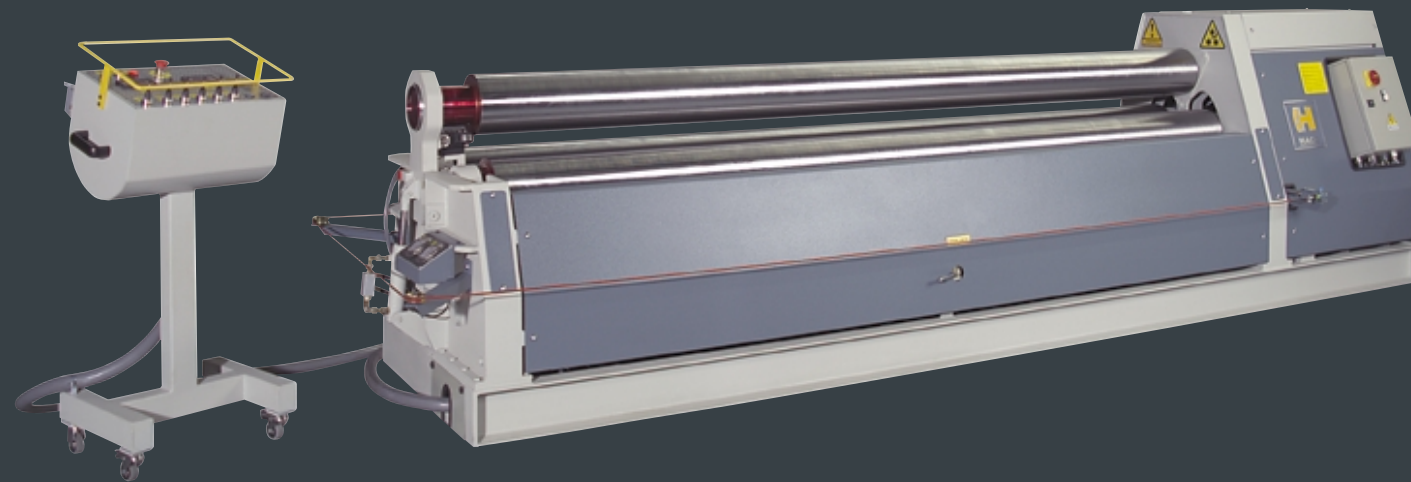




for impressive
performances



3HBR & 4HBR SERIES

hydraulic bending roll machines

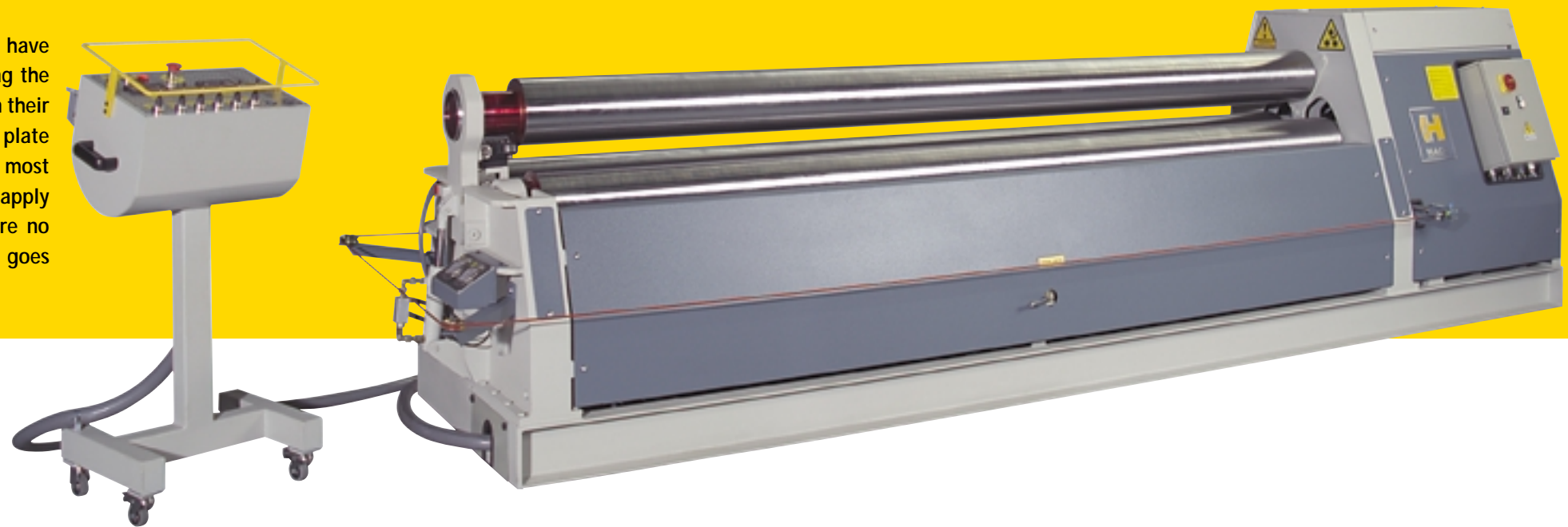


3HBR SERIES



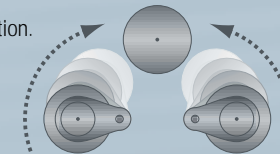
for impressive performances

Three rolls Hydraulic bending machine. These machines have three powered rolls to guarantee proper dragging during the bending procedure. The two side rolls feature a groove on their surface which is able to indicate the right position of the plate and for correct squaring. Superb quality price ratio is the most important characteristic of these machines. The machines apply planetary gear boxes and hydraulic motors. They require no maintenance at all. Furthermore, this way the power goes directly to the rolls without losing force.



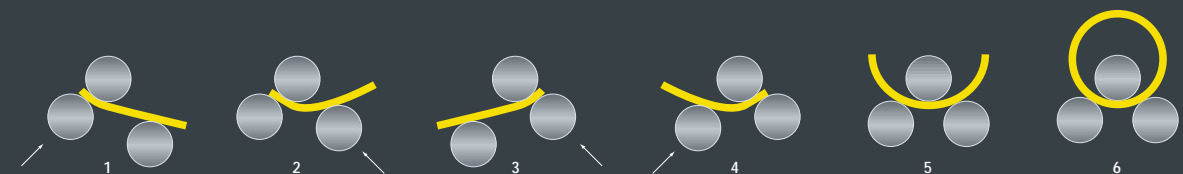
standard equipment on 3HBR machines

- Two digital readouts for the bending (side) rolls position.
- Hardened roll 50 to 55 HRC.
- Hydraulic conical bending device.
- Three powered rolls.



options

- Numerical Control type 3000 or WIN98.
- CNC control Windows 98 Pro machines.
- Conical Bending.
- Powered ejector (from 100 kg to 1.000 kg).
- Radius measuring tool.
- Pre-disposition for a hydraulic movement.
- Pre-disposition for interchangeable top roll.
- Control panel on wheels.
- Remote control machines.
- Heat exchanger machines (different sizes).
- Squaring arm.
- Rolls for section bending in board machines.
- Side support (1.500kg to 4.000kg).
- Central Support (600 kg to 10.000kg).
- Powered table.
- Free table.
- Vacuum Conveyor (100kg to 600kg).
- Hardening and polishing rolls.
- Digital readouts.
- Digital readouts for cone machines.
- Rotation digital readouts.
- Calibration.
- Electrohydraulic Calibration.



Working of the machine:

- 1 Pinching the plate with the left roll.
- 2 First pre-bending.
- 3 Pinching the plate with the right roll.
- 4 Second pre-bending.
- 5 When the two pre-bendings are done we can start rolling.
- 6 Done.



for impressive
performances

3HBR SERIES

MODEL	USEFUL LENGTH	BENDING	PREBENDING	Ø RS	Ø RI	KW	TONNS
3 HBR 124	1.250	4	2	120	110	2,9	1,1
3 HBR 153	1.550	3	1,5	130	125	2,9	1,2
3 HBR 176	1.750	6	4	150	150	2,9	1,4
3 HBR 204	2.050	4	2	140	130	2,9	1,6
3 HBR 206	2.050	6	4	160	150	2,9	2
3 HBR 208	2.050	8	6	195	180	2,9	2,6
3 HBR 210	2.050	10	8	210	190	4	3
3 HBR 213	2.050	13	10	230	200	5	3,5
3 HBR 218	2.050	18	14	260	240	7,5	4
3 HBR 220	2.050	20	16	270	260	11	4,8
3 HBR 256	2.600	6	4	190	170	2,9	2,3
3 HBR 258	2.600	8	6	205	185	2,9	3
3 HBR 2510	2.600	10	8	210	190	4	3,5
3 HBR 2513	2.600	13	10	240	220	5	4,2
3 HBR 2516	2.600	16	13	260	240	7,5	4,8
3 HBR 2520	2.600	20	16	320	300	11	5,6
3 HBR 2525	2.600	25	20	330	310	15	6
3 HBR 2535	2.600	35	30	350	330	18	7
3 HBR 306	3.100	6	4	200	190	2,9	3
3 HBR 308	3.100	8	6	220	210	4	3,8
3 HBR 310	3.100	10	8	240	230	5	4,8
3 HBR 313	3.100	13	10	280	260	7,5	6,5
3 HBR 316	3.100	16	13	300	270	11	7,1
3 HBR 320	3.100	20	16	340	320	11	9
3 HBR 325	3.100	25	20	360	330	15	12
3 HBR 332	3.100	32	25	400	380	18	14
3 HBR 340	3.100	40	30	450	410	30	22
3 HBR 350	3.100	50	40	530	500	44	30
3 HBR 360	3.100	60	45	600	540	55	36
3 HBR 406	4.100	6	4	245	230	5,5	6,8
3 HBR 408	4.100	8	6	270	240	5,5	9
3 HBR 410	4.100	10	8	320	300	7,5	12,6
3 HBR 413	4.100	13	10	340	310	9	14,8
3 HBR 416	4.100	16	14	380	350	11	17,7
3 HBR 420	4.100	20	16	410	380	15	20,6
3 HBR 425	4.100	25	20	460	420	18,5	28,15
3 HBR 432	4.100	32	25	510	460	22	33,15
3 HBR 440	4.100	40	32	580	540	30	47,8
3 HBR 450	4.100	50	40	650	600	44	56,9
3 HBR 460	4.100	60	45	700	650	55	64

4HBR SERIES

Four rolls Hydraulic plate bending machines EH models. Four rolls machines are characterised by a high production output. machines. They feature two powered rolls, where transmission is delivered through planetary gear boxes. They also have as standard equipment the pinching without damaging the material. Easy and very fast as no other type of machine. Exclusive Calibration system which allow you to stop the lower roll rotation when you have to re bend a pre welded pipe. All the power goes to the top roll so that you can use the machine as a three rolls. Exclusive Calibration system which is able to move the bending rolls in the low position even when the electric motor is under emergency. No electric power requested to move the side rolls down. The first point to consider before buying a machine is to be sure to have the best possible safety and this is what we offer.



4HBR SERIES

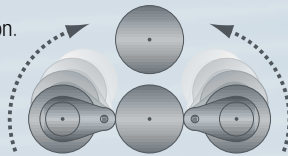


for impressive performances



standard equipment on 4HBR machines

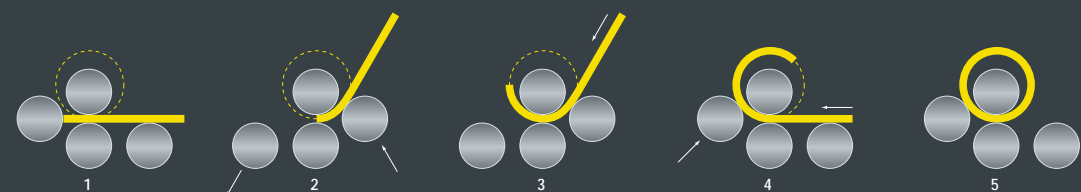
- Two digital readouts for the bending (side) rolls position.
- Hardened roll 50 to 55 HRC.
- Hydraulic conical bending device.
- Two central rolls powered.



options

- Numerical Control type 3000 or WIN98.
- CNC control Windows 98 Pro machines.
- Conical Bending.
- Powered ejector (from 100 kg to 1.000 kg).
- Radius measuring tool.
- Pre-disposition for a hydraulic movement.
- Pre-disposition for interchangeable top roll.
- Control panel on wheels.
- Remote control machines.
- Heat exchanger machines (different sizes).
- Squaring arm.
- Rolls for section bending in board machines.
- Side support (1.500kg to 4.000kg).
- Central Support (600 kg to 10.000kg).
- Powered table.
- Free table.
- Vacuum Conveyor (100 kg to 600 kg).
- Hardening and polishing rolls.
- Digital readouts.
- Digital readouts for cone machines.
- Rotation digital readouts.
- Calibration.
- Electrohydraulic Calibration.

MODEL	USEFUL LENGTH	BENDING	PREBENDING	KW	Ø RS	Ø RI	Ø RL	TONNS
4 HBR 123 P	1.250	3	1,5	2,2	80	120	110	1,2
4 HBR 126 P	1.250	6	4	2,2	125	120	110	1,5
4 HBR 176 P	1.750	6	4	2,2	140	120	110	1,6
4 HBR 206 P	2.050	6	4	2,2	160	120	110	2,1
4 HBR 208A	2.050	8	6	3	190	170	150	3,3
4 HBR 210 B	2.050	10	8	4	210	190	170	3,5
4 HBR 212 B	2.050	12	10	5,5	220	200	180	4
4 HBR 214 C	2.050	14	12	5,5	250	260	225	4,8
4 HBR 216 C	2.050	16	14	7,5	270	260	225	5,1
4 HBR 220 D	2.050	20	16	11	280	260	220	7,5
4 HBR 225 D	2.050	25	20	11	300	270	230	8
4 HBR 235 D	2.050	35	28	15	340	310	260	10,2
4 HBR 240 F	2.050	40	32	22	380	350	300	13
4 HBR 250 G	2.050	50	40	30	430	380	330	16,2
4 HBR 260 H	2.050	60	50	44	500	460	380	23
4 HBR 270 I	2.050	70	55	55	540	490	400	29
4 HBR 280 I	2.050	80	65	55	570	520	440	34
4 HBR 256 P	2.600	6	4	3	180	170	140	3,1
4 HBR 258 A	2.600	8	6	3	200	180	150	3,9
4 HBR 2510 B	2.600	10	8	4	220	210	170	4,4
4 HBR 2512 B	2.600	12	10	5,5	240	220	175	4,5
4 HBR 2514 C	2.600	14	12	7,5	270	250	210	6,3
4 HBR 2516 C	2.600	16	14	7,5	280	260	210	6,6
4 HBR 2520 D	2.600	20	16	11	330	310	240	9,6
4 HBR 2525 D	2.600	25	20	15	350	330	250	9,9
4 HBR 2530 E	2.600	30	22	15	360	340	280	12,3
4 HBR 2535 F	2.600	35	30	22	400	380	310	15
4 HBR 2545 G	2.600	45	35	30	460	420	350	22,6
4 HBR 2550 G	2.600	50	40	44	510	460	400	25
4 HBR 2560 H	2.600	60	45	44	520	480	410	30
4 HBR 2570 I	2.600	70	55	55	580	530	450	38
4 HBR 306 A	3.100	6	4	3	210	190	150	4,2
4 HBR 308 B	3.100	8	6	4	225	215	170	4,9
4 HBR 310 B	3.100	10	8	5,5	250	230	190	5,7
4 HBR 314 C	3.100	14	12	7,05	290	270	210	7,5
4 HBR 320 D	3.100	20	16	11	350	325	245	11,5
4 HBR 325 E	3.100	25	20	15	380	350	290	16,5
4 HBR 330 E	3.100	32	25	15	410	370	300	19
4 HBR 335 F	3.100	35	28	22	430	400	330	21
4 HBR 340 G	3.100	40	32	30	460	420	370	24,6
4 HBR 345 G	3.100	45	35	30	480	440	370	25
4 HBR 350 H	3.100	50	40	44	540	500	440	46
4 HBR 360 I	3.100	65	50	55	640	550	470	60
4 HBR 380 N	3.100	85	60	75	720	650	550	90
4 HBR 3110 T	3.100	110	80	110	820	760	640	110
4 HBR 406 B	4.100	6	4	5,5	245	230	150	8
4 HBR 408 B	4.100	8	6	5,5	270	240	200	11
4 HBR 410 C	4.100	10	8	7,5	320	300	230	16
4 HBR 412 C	4.100	12	10	9	350	320	230	18
4 HBR 416 D	4.100	16	14	11	380	350	290	22
4 HBR 420 E	4.100	20	16	15	420	380	310	26
4 HBR 425 E	4.100	25	20	18,5	460	420	370	36
4 HBR 432 F	4.100	32	25	22	510	460	390	42
4 HBR 440 G	4.100	40	32	30	580	540	460	58
4 HBR 450 H	4.100	50	40	44	650	600	500	69
4 HBR 460 I	4.100	60	45	55	700	650	550	80



Working of the machine:

- 1 Plate squaring and pinching.
- 2 First pre-bending.
- 3 Rolling.
- 4 Rolling & second pre-bending.
- 5 Done.



for impressive
performances

HACO nv
Oekensestraat 120
B-8800 Rumbeke
BELGIUM
tel.: +32 (0)51 26 52 00
fax: +32 (0)51 26 52 01
www.haco.com
e-mail: sales@haco.com

OMATIC 212 RH



OMATIC 130 DTRH



MILLENNIUM 3015

